



Georgia Tech

Emergency Management
and Communications

SITUATIONAL AWARENESS

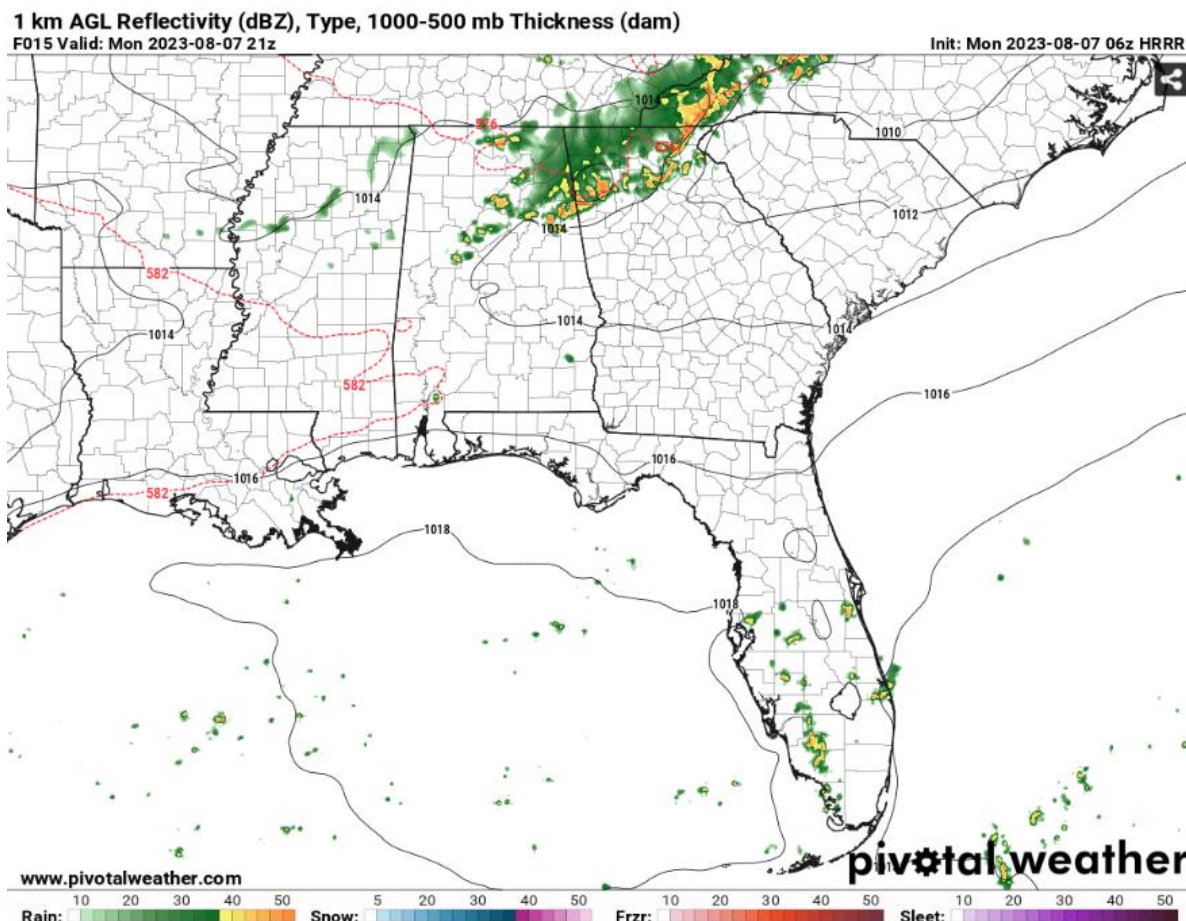
SUBJECT: Severe Weather Possible this Evening

SITREP #: 2023-6.2

ISSUED: Monday, August 7, 2023 at 10:00 AM

OVERVIEW

Severe weather is possible this evening starting as early as 4 pm with rain continuing through 8 pm. Hot and humid conditions present today will provide ample fuel for the unseasonably strong trough pushing across the Ohio River Valley into the Southeast. These conditions will help to support severe storms this evening with Atlanta in an Enhanced Risk (level 3 of 5) for strong, damaging winds. As this is the main hazard, the Storm Prediction Center has also issued a severe wind outlook. Atlanta is in the red color (figure 2) which is a 40% chance of wind gusts between 50-70 mph. These strong wind gusts have the power to cause tree damage which can lead to power outages. While the Georgia Tech campus is fairly resilient to power interruption, Atlanta is not. As such, travel to and from work may be impacted due to the density of trees around Atlanta. Please use caution when traveling and do not drive over downed power lines.

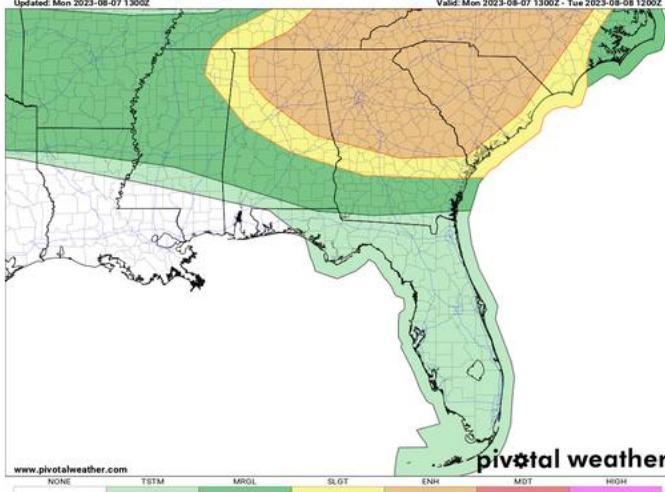


Storm Prediction Center - Day 1 Outlook 4-Panel

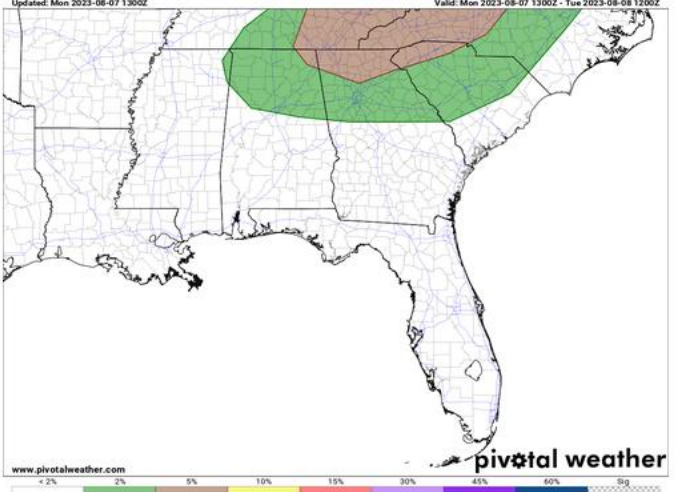
Updated: Mon 2023-08-07 1300Z

Valid: Mon 2023-08-07 1300Z - Tue 2023-08-08 1200Z

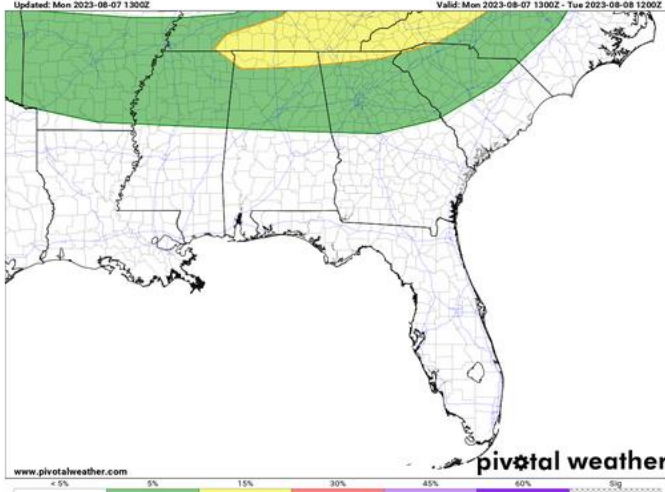
Storm Prediction Center - Day 1 Categorical Outlook



Storm Prediction Center - Day 1 Tornado Outlook



Storm Prediction Center - Day 1 Hail Outlook



Storm Prediction Center - Day 1 Wind Outlook

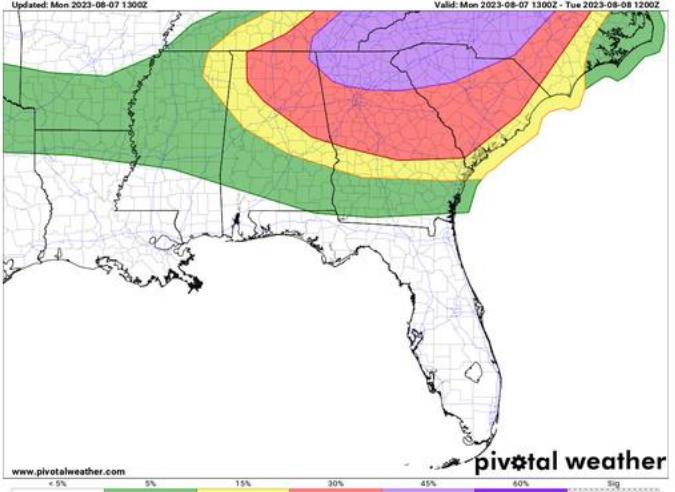


Figure 2: Day 1 SPC Outlook

PRIMARY HAZARDS

- Strong, damaging winds in excess of 50 mph causing tree damage and power outages
- Small hail

NEXT STEPS

- The Georgia Tech Police Department Office of Emergency Management will continue to monitor the situation and provide updates as necessary.
- For the latest forecast information, please visit the National Weather Service at <http://weather.gov/atlanta> and the Storm Prediction Center at <http://spc.noaa.gov>.