

SITUATIONAL AWARENESS

SUBJECT: Severe Weather Potential on Thursday
SITREP #: 2020-6.2
ISSUED: Tuesday, April 22, 2020 at 1600

OVERVIEW

New model guidance continues to support the possibility of two rounds of severe weather impacting the area tomorrow. The first round is likely to push through metro Atlanta in the late morning/early afternoon. This feature will be linear in nature with the main hazards being damaging winds and hail. What happens after the first round of storms passes will determine if the second round materializes. If the atmosphere can sufficiently destabilize after the first round, the potential for discrete storms increases. These discrete cells could produce strong tornadoes, damaging winds, and large hail. Redevelopment, if it happens, should be during the late afternoon/early evening and is conditional based upon the atmosphere's ability to recover and destabilize from the earlier storms. The SPC keeps Atlanta in the Enhanced Region (level 3 of 5) tomorrow based on this conditional threat.

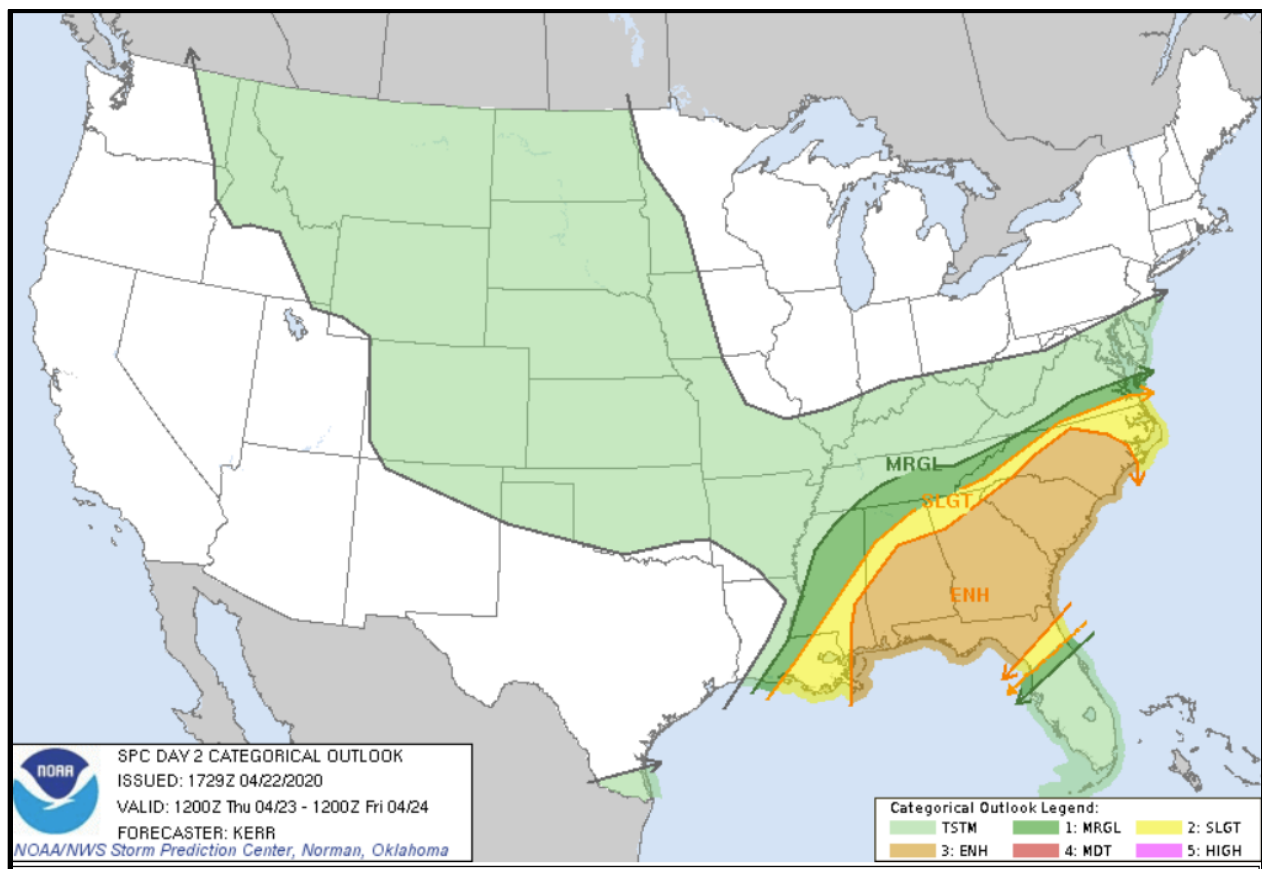


Figure 1: Day 2 Categorical Severe Weather Outlook (SPC)

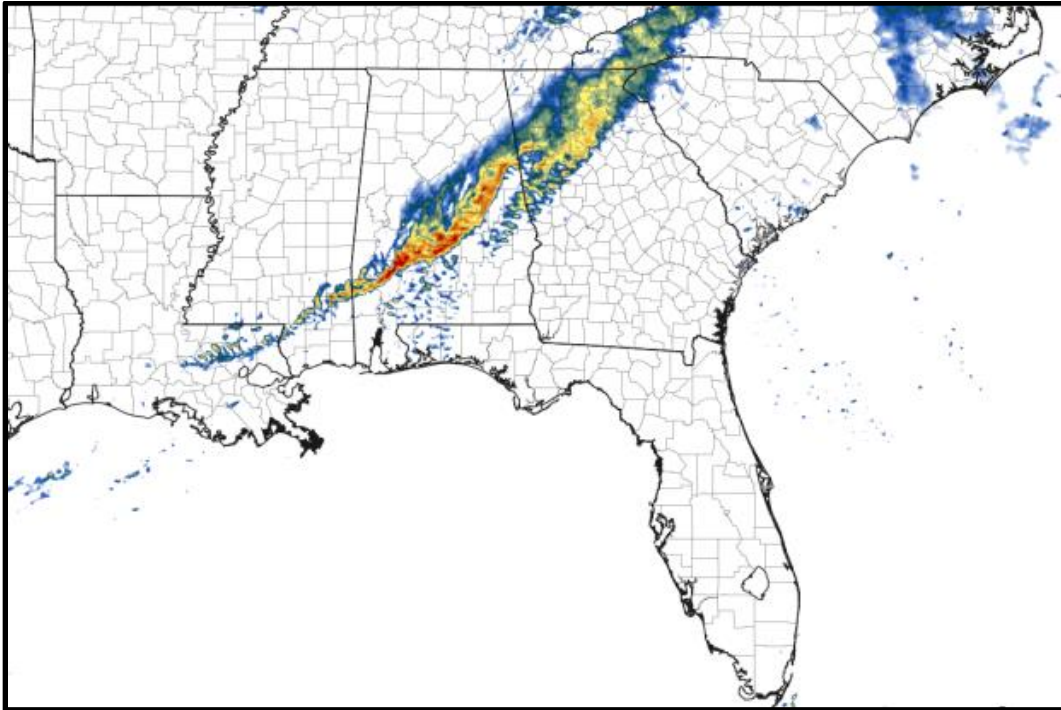


Figure 2: NAM Reflectivity at 11:00am

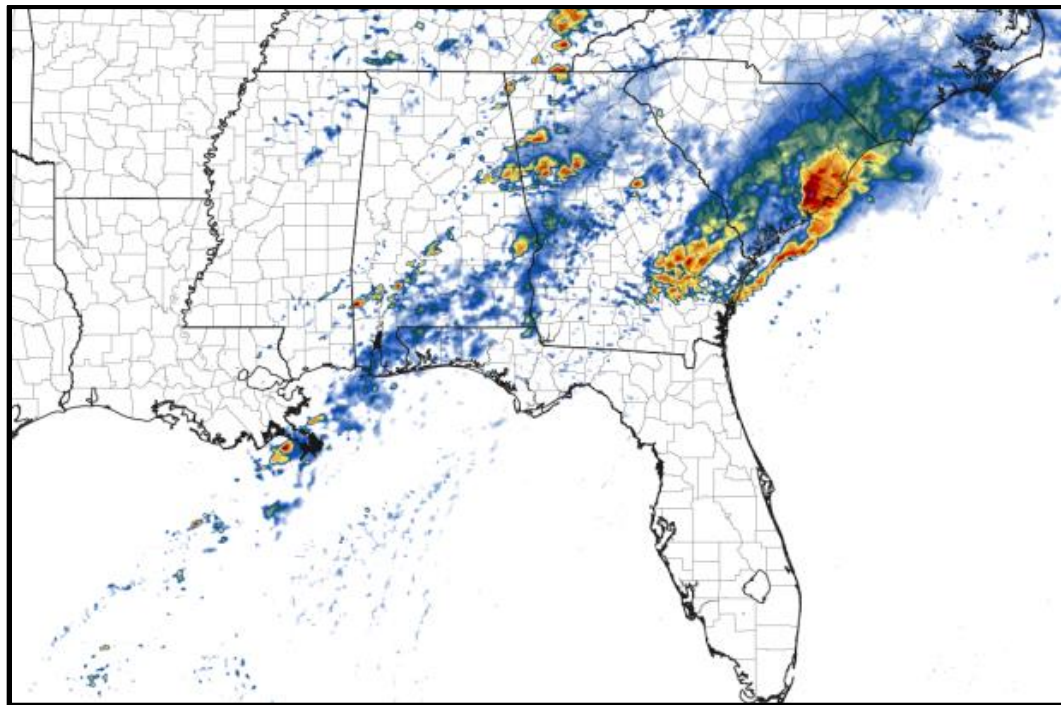


Figure 3: NAM Reflectivity at 8:00pm

PRIMARY HAZARDS

The primary hazards will be from tornadoes, damaging winds, hail, and flooding.

TIMING

Multiple rounds of severe weather could occur beginning late Thursday morning/early afternoon and again late Thursday afternoon/evening.

NEXT STEPS

- The Georgia Tech Police Department Office of Emergency Management will continue to monitor the situation and provide updates as necessary.
- Follow the GT Office of Emergency Management on twitter [@gtpdalerts](https://twitter.com/gtpdalerts).
- For the latest forecast information, please visit the National Weather Service at <http://weather.gov/atlanta>.